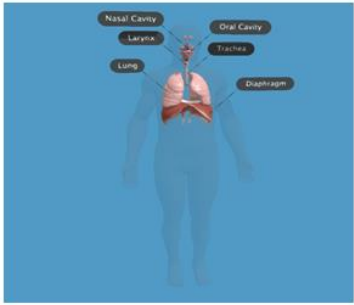
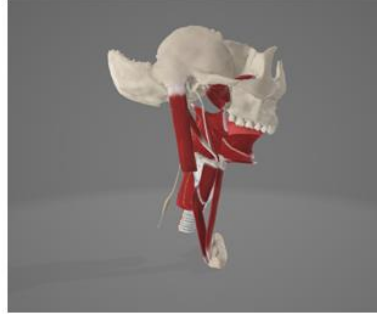


## Respiratory System



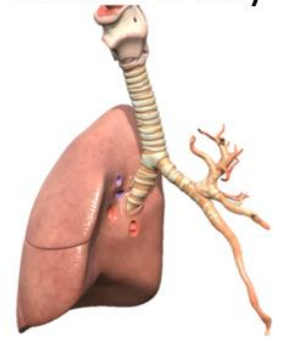
## Upper Airway



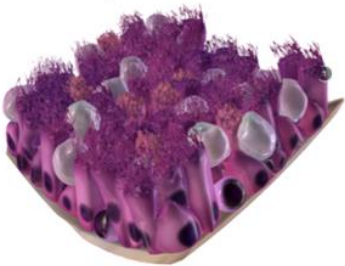
## Larynx



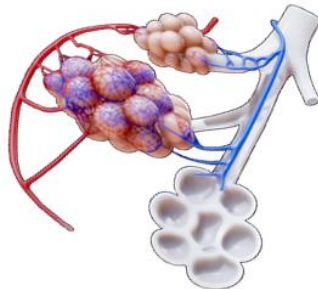
## Lower Airway



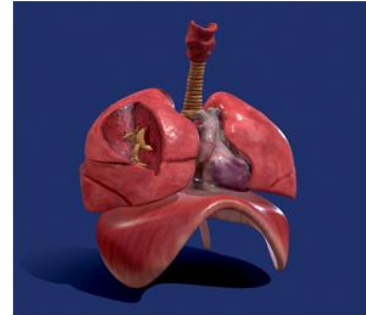
## Pseudostratified Epithelium



## Alveolar Ducts, Sacs, and Cells



## Pulmonary Anatomy



## Lung Diseases



Jump | SIMULATION  
Trading | Cards



**Respiratory  
Series - 3**

Jump | SIMULATION  
Trading | Cards



**Respiratory  
Series - 3**

Jump | SIMULATION  
Trading | Cards



**Respiratory  
Series - 3**

Jump | SIMULATION  
Trading | Cards



**Respiratory  
Series - 3**

Jump | SIMULATION  
Trading | Cards



**Respiratory  
Series - 3**

Jump | SIMULATION  
Trading | Cards



**Respiratory  
Series - 3**

Jump | SIMULATION  
Trading | Cards



**Respiratory  
Series - 3**

Jump | SIMULATION  
Trading | Cards



**Respiratory  
Series - 3**