



20
23

OSF HealthCare Saint Francis Medical Center

NURSING ANNUAL REPORT

TABLE OF CONTENTS

Letter from our CNO	3
A Mission that Makes a Difference	4
By the Numbers.....	5
Our Nurses	6
Magnet Designation	7
Accreditations	8
Nursing Awards.....	9
Sister Canisia Scholarship	15
Nursing Certifications	16
DAISY Awards	27
Dedicated Education Units.....	31
Measuring our Success	33
Research, Publications and Presentations.....	34
OSF Strategic Plan	36
Professional Governance	37
Nurse Mixers	38
Carpe Noctem	39
Innovation.....	40
Career Ladders	43
Serving the Community	47
Building for the Future.....	48
2024 Nursing Strategic Plan.....	49



Our professional practice model shows how our nurses practice, collaborate, communicate and develop professionally to provide the highest-quality care for our patients.

LETTER FROM OUR CNO

Dear Professional Nurses,



It is my pleasure to present the OSF HealthCare Saint Francis Medical Center Nursing Annual Report. This report demonstrates how our OSF Professional Practice Model, grounded in the Mission of our Sisters, continues to guide our practice with patients and families. Through our model's key components of transformational leadership, structural empowerment, exemplary professional practice and new knowledge and innovation, OSF Saint Francis nurses continue to demonstrate their dedication to the pursuit of excellence, resulting in our success as a Magnet-designated health care organization. Each of you has done this while serving our patients and each other with the greatest care and love.

OSF Saint Francis continues to elevate the nursing profession through transformational leadership at all levels, as well as how interprofessional collaboration and advocacy allow us to continue to move forward in the ever-changing landscape of health care. You all should be proud of how we have worked to create an environment that supports autonomous, evidence-based care. We also showcase how OSF Saint Francis nurses are committed to the population of patients they serve by providing effective and efficient care and services leading to high-quality outcomes grounded in a culture of safety.

This report is testimony to the many ways OSF Saint Francis nurses are empowered to improve the care of patients and the community we serve through the mindful integration of evidence-based practice and research into clinical and operational processes. Patient experience and operational efficiency are at the core of all we do, and our nurses continue to develop and utilize innovative technologies and approaches to improve upon those areas.

It is a great honor to serve as your leader on this journey. I appreciate your hard work and thank you for your commitment to our patients and their families. I am proud and humbled to work alongside such an exceptional team of professionals.

Sincerely,

A handwritten signature in cursive script that reads "Jennifer Croland". The signature is written in a dark ink and is positioned below the word "Sincerely,".

Jennifer Croland, DNP

Chief Nursing Officer, Vice President, Patient Care Services
OSF HealthCare Saint Francis Medical Center

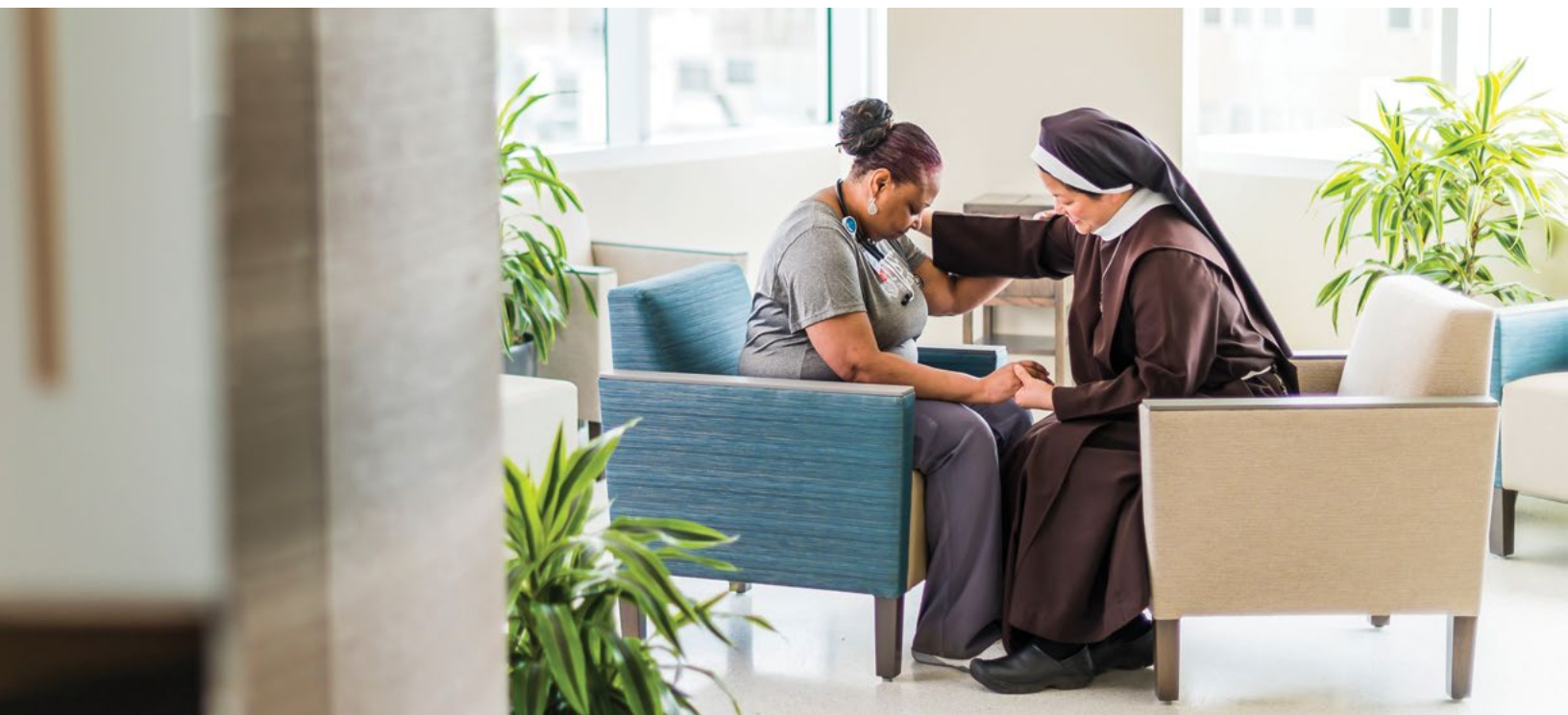
A MISSION THAT MAKES A DIFFERENCE

OSF HealthCare Mission

In the spirit of Christ and the example of Francis of Assisi, the Mission of OSF HealthCare is to serve persons with the greatest care and love in a community that celebrates the Gift of Life.

Nursing Vision

To earn the trust of our patients through exceptional, compassionate care and where nurses are valued, appreciated and have professional agency.



For over 146 years, the Mission of OSF HealthCare has come to life through nursing practice in the communities we serve. Our Philosophy states: The Sisters of The Third Order of St. Francis believe that led by the Spirit of the Gospels and the example of St. Francis, the special purpose of our existence as an organization is to provide for the total well-being of those we serve.

Our Foundress, Mother M. Frances Krasse, said,

“Nurse the sick with the greatest care and love; then will God’s blessing be with you.”

Our dedicated nurses at OSF Saint Francis continue to live out these words, which crafted our Mission in service to the poor, the sick and the vulnerable in our midst.

BY THE NUMBERS

In 2023, OSF Saint Francis Mission Partners managed the following:



211,859

Patients

181,657

Inpatient Days

644,303

Outpatient Visits

73,499

Emergency
Department Visits

30,178

Hospital
Discharges

48,813

Surgical
Procedures

676,351

Patient Visits

1,017,642

Physician office visits

OUR NURSES

Nursing demographics

CLINICAL NURSE STATISTICS (OTHER THAN APRN)

RN FTE	1,163.94
RN turnover rate	22%
RN vacancy rate	2%
Percent certified	24%
Percent with ADN	13%
Percent with diploma	3%
Percent with BSN	81%
Percent with MSN	3%
Percent with doctorate	0%

LEADERSHIP STATISTICS (HIGHEST LEVEL OF ACHIEVEMENT)

Percent certified	60%
Percent with ADN	0%
Percent with diploma	0%
Percent with BSN	43%
Percent with MSN	48%
Percent with masters	2%
Percent with PhD	0%
Percent with doctorate	7%

New Hire RNs

From January 1 – November 8, 2023, 292 Mission Partners with the RN title were hired. In addition, there were eight individuals hired with RN qualifications who are not working directly as an RN:

- Clinical education scholar (2)
- Coordinator clinical research RN
- Coordinator quality and safety RN
- Coordinator transplant (2)
- Crisis nurse
- Neo and perinatal outreach educator

**Total number of
OSF Saint Francis RNs: 1,700**

**Average tenure of
OSF Saint Francis RNs in 2023: 8.26 years**



MAGNET DESIGNATION

Our fifth Magnet designation

The American Nurses Credentialing Center's (AANC) Magnet® designation is the most prestigious credential a health care organization can attain for excellence in nursing and quality patient care. The Magnet® Model is one way health care organizations invest in their nursing workforce and can serve as a blueprint for nursing excellence.

As of October 2023, only 10% of hospitals in the U.S. are designated Magnet. In April 2023, OSF Saint Francis earned its fifth designation as a Magnet facility. Only 7% of Magnet hospitals have received their fifth designation.



Magnet Conference 2023

OSF HealthCare nurses attended the annual AANC National Magnet Conference and AANC Pathway to Excellence Conference in Chicago, gaining insights on ongoing competency and training, standardizing care and processes, and the latest evidence-based tools to support achieving and maintaining Magnet and Pathway to Excellence status.

“

Attending the Magnet Conference was a privilege! I left feeling empowered that OSF Saint Francis is ahead of the curve in almost every aspect of health care. I was able to watch a presentation on ambulatory shared governance and take back nuggets that will enhance our existing HOD Professional Nursing Congress.

Hayley Madigan MSN, RN, NE-BC

”

“

Magnet is a unique opportunity to be surrounded by thousands of nurses at the top of their practice who are eager to learn and grow. Magnet opened my eyes to the breadth of nursing. Magnet shows what the best of the best are doing in health care and how to incorporate new and innovative ideas in your organization.

Lauren Kramer BSN, RN, CMSRN

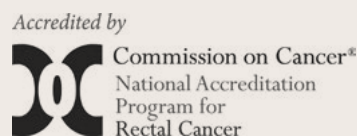
”

ACCREDITATIONS

Organizational awards and recognitions

OSF Saint Francis RNs are proud of being nationally recognized for excellence, as demonstrated by the following specialty accreditations that were renewed over the past year.

Name	Type	Applicability	Last Survey
Joint Commission	Accreditation	Hospital	April 18-21, 2023
CMS Transplant Services	Accreditation	Heart Transplant	November 15-17, 2022
American Nurses Credentialing Center (ANCC) Magnet Recognition	Recognition	Nursing	February 27 – March 1, 2023
Extracorporeal Life Support Organization (ELSO) – Adult	Center of Excellence	Adult ECMO	February 8, 2023
ACS National Accreditation Program for Rectal Cancer	Accreditation	Rectal Cancer	March 22, 2023
ACS Metabolic and Bariatric Surgery Accreditation and Quality Improvement Program (MBSAQIP)	Accreditation	Bariatric	May 9, 2023
IDPH Pediatric Critical Care Center & Emergency Department Approved for Pediatrics (PCCC/EDAP)	Recognition	Emergency Department	June 26, 2023 and July 25, 2023
Det Norske Veritas – Ventricular Assistive Device (DNV-VAD)	Accreditation	Transplant	September 26, 2023



NURSING AWARDS

Nursing Awards and Recognitions

In recognizing the gifts each nursing Mission Partner brings to this Ministry, we, in turn, hope to elevate and inspire the practice of all nurses as they demonstrate impact on our Mission by providing the greatest care and love.

Nursing Excellence Award Nominees

The nomination process aims to identify those Mission-driven nurses who exemplify our cultural beliefs while addressing our organization’s strategic priorities. Mission Partner peers, leaders and providers may nominate these exceptional nurses or groups of nurses.

EMPOWERMENT – DIRECT	
Ailshie, Christina	Almost Home Kids
Bowers, Mia	Pediatrics Hema/Oncology
Burget, Brittney	Adult Cardiac Intensive Care
Chatterton, Julie	PICU
Coutre, Abby	Pediatrics
Fehr, Rachel	Patient Logistics/Crisis Nurses
Hainline, Cheyanne	Labor and Delivery
Hoskins, Bryanna	Surgical Acute
Laible, Janell	GI Lab
Monckton, Ashley	Women’s Care Unit
Myers, Eric	NCCU-NIC
Norris, Sara	Dialysis
Prather, Haylee	Emergency Department
EMPOWERMENT – INDIRECT	
Miller, Maleka	Quality/Safety
Stoller, Katelyn	Professional Development

EXEMPLARY – LEADER

Kacir, Reta	Oncology Acute
Routley, Matthew	SPAC

EXEMPLARY – DIRECT

Aldag, Alison	Surgical ICU
Baxter, Haley	Neuroscience Intensive Care
Carr, Kathleen	Medical ICU
Easley, Caitlyn	Neonatal ICU
Hartseil, Leanne	OB Acute
Huynh, Jenny	6-Ortho Surgical
Kapusta, McKayla	AMSU
Kieser, Holli	Emergency Department
Klinger, Jennifer	Pediatrics
Lawson, Tiffany	1700/MACU
Martin, Katie	CTU
Nyman, Perla	Pediatrics Hema/Oncology
Quezada Manzo, Larissa	Women’s Care Unit
Richards, Jessica	Short Stay Unit
Roe, Erline	Acute Neurology
Ryan, Keegan	Patient Logistics/Crisis Nurses
Siron, Bambee	Dialysis
Somogyi, Sara	Recovery Room Services
Welch, Matthew	Adult Cardiac Intensive Care

EXEMPLARY – INDIRECT

Hawn, Amy	OSF Cancer Services
Johnson, Kimberly	St. Jude Clinic

INNOVATOR – DIRECT

Clope, Janice	Stepdown Care Unit
Dadds, Elizabeth	Wound Healing/Hyperbaric Center
Eltagon, Kenn Rea	AMSU
Field, Pamela	PICU
Hood, Adoracion	6-Ortho Surgical
Johnson, Kelly	GI Lab
Lambrich, Paige	MCCU-NIC
Mahoney-Daugherty, Daryl	Surgical Acute
Mathews, Lucas	Pediatrics Intermediate Care
Speight, Emily	Adult Cardiac Stepdown
Ward, Marissa	1700/MACU

INNOVATOR – INDIRECT

Oliver, Marjorie	Professional Development
Pollard, Katie	Quality/Safety

TRANSFORMATIONAL LEADERSHIP – DIRECT

Cphoon, Emily	Pediatrics Intermediate Care
Craig, Brooke	Medical ICU
Flynn, Heather	OB Acute
Leones, Giovanni	Stepdown Care Unit
Malcom, Andrew	Adult Cardiac Stepdown
Stark, Elizabeth	Surgical ICU

TRANSFORMATIONAL LEADERSHIP – LEADER

Arnold-Mabus, Jill	Neuroscience Intensive Care
Burden, Christina	Short Stay Unit
Washington, Teressa	Gen/Peds Hema/Oncology

NURSING LEGACY

Beck, Janette	Pediatrics
Goetze-Bradley, Robyn	Professional Development
Gray, Laura	AMSU
Peck, Bradley	AHU/CVICU
Scott, Dona	Medical ICU
Zuercher, Anne	Recovery Room Services

TEAM-INTERDISCIPLINARY COLLABORATION

Long, Ashley	Quality/Safety
--------------	----------------



Nursing Excellence Award Winners

The nomination process aims to identify those Mission-driven nurses who exemplify our cultural beliefs while addressing our organization’s strategic priorities. Mission Partner peers, leaders and providers may nominate these exceptional nurses or groups of nurses.

	Direct	Indirect	Leader
Empowerment	Myers, Eric	Miller, Maleka	
Innovator	Johnson, Kelly	Oliver, Marji	
Transformational Leadership	Malcom, Andrew		Arnold-Malbus, Jill
Exemplary Professional Practice	Somogyi, Sara	Johnson, Kim	Kacir, Reta
Legacy Award	Zuercher, Anne	Goetze-Bradley, Robyn	
Team	OSF Children’s Hospital – Injury Steering Team		



“I Am an OSF Nurse” Excellence Award

Each chief nursing officer submits nominee stories through the online nomination system. Each nominee’s story has all identifiable criteria removed, including name, title and facility. The anonymous stories are then reviewed and evaluated by the nomination review board, which is comprised of Mission Partner leaders throughout our Ministry. Final award winners are selected with the consensus of all nomination review board members for each category.

“I Am an OSF Nurse” Excellence Award Winners

NURSE EMPOWERMENT	
Miller, Maleka	OSF Saint Francis
Myers, Eric	OSF Saint Francis

INNOVATOR IN NURSING	
Johnson, Kelly	OSF Saint Francis
Oliver, Marjorie	OSF Saint Francis
Swearingen, Eric	OSF Saint Francis

SISTER CANISIA SCHOLARSHIP

The Sister Canisia Gerlach O.S.F Scholarship was established in 2003 in honor of its namesake’s longtime devotion to patients and nursing. Sister Canisia served as administrator of OSF Saint Francis from 1960 to 1998. While she spent most of her career in administration, her roots and heart were in nursing. Her work in patient care began in 1940 with Sister Canisia initially serving as a nurse and later as a nurse anesthetist.

The fund provides support for clinical excellence and the advancement of nursing. The specific goals are to strengthen the professional development of nurses, enhance recruitment and retention of nurses and provide patient care of the highest quality. An education scholarship is awarded for the spring and fall semesters. A research scholarship is awarded annually.



Education scholarships

Recipient	Department	Degree
Craig, Alecia, BSN, CMSRN	Professional Development	MSN
Hinrichsen, Lynsi, MSN, CPHQ	Ambulatory Education	DNP
Nelson, Amanda, BSN, CMSRM	Professional Development	MSN
Vandel, Kennedy, BSN	Quality & Safety	BSN

Research Scholarship Award: \$9,096

Research Study Title

Examining the Intervention Effectiveness of Hospital at Home for Improving Health Outcomes and Experiences for Patients, Clinicians and Caregivers.

Co-Principal Investigators

- Klein, Colleen, PhD, APRN, FNP-BC, FAAN
- Cooling, Melinda, DNP, MBA, APRN, FNP-BC, NEA-BC, FAANP
- Dalstrom, Matthew, PhD, MPH

NURSING CERTIFICATIONS

The following people have earned nursing certifications for 2023.

Name	Department	Certification
Adams, Lisa M	Orthopedics Acute	Orthopaedic Nursing
Ailshie, Christina	Pediatric Intermediate Care	Pediatric Nurse
Albert, Jessica K	Surgical Acute	Medical-Surgical Registered Nurse
Albritton, Stephanie G	Adult Cardiac ICU	Critical Care Registered Nurse
Aldag, Kimberly A	Neonatal Intensive Care	Neonatal Intensive Care Nursing
Alexander, Cary L	Labor and Delivery Services	Inpatient Obstetric Nursing
Allen, Kimberly J	Surgical Acute	Medical-Surgical Registered Nurse
Allenbaugh, Julie A	Neonatal Intensive Care	Neonatal Intensive Care Nursing
Allmon, Susan R	Surgical Acute	Medical-Surgical Registered Nurse
Andal, Freedom R	Adult Cardiac ICU	Critical Care Registered Nurse
Antonini, Gina L	Surgical Acute	Medical-Surgical Registered Nurse
Arnold, Jill K	Neuroscience Intensive Care	Stroke Registered Nurse
Augspurger, Lori A	Neuroscience Intensive Care	Neuroscience Registered Nurse
Avery, Linda C	Cardio-Thoracic Unit	Medical-Surgical Registered Nurse
Bailliez, Falyynn M	Recovery Room Services	Neonatal Intensive Care Nursing
Baker, Julie A	Pediatric Allergy	Trauma Registered Nurse
Balentine, Cody L	Surgery – General (Major)	Medical-Surgical Registered Nurse
Ballard, Julie M	Neuro Med-Surg Acute-3500	Neuroscience Registered Nurse
Bandy, Jennifer A	Clinical Research	Medical-Surgical Registered Nurse
Barch, Natalie L	Pediatric Intermediate Care	Pediatric Nurse
Baylor, Brenda E	Surgery – General (Major)	Nurse Operating Room
Berardi, Elizabeth	Surgery Administration	Ambulatory Perianesthesia Nurse
Birch, Nicole M	Recovery Room Services	Pediatric Nurse
Blackmore, Carmon M	Pediatric Acute	Medical-Surgical Registered Nurse
Blair, Kathryn M	Adult Medical Specialty Unit	Medical-Surgical Registered Nurse
Bond, Glenn M	Adult Cardiac ICU	Critical Care Registered Nurse
Boyer, Annette M	Pediatric Intensive Care	Critical Care Registered Nurse
Brandes, Brianna M	Orthopedics Acute	Medical-Surgical Registered Nurse
Brandt, Kathy E	Surgery Preadmission Center	Ambulatory Perianesthesia Nurse

Brignall, Jamie N	Surgery Administration	Pediatric Nurse
Brodeur, Teresa E	Emergency Services	Emergency Nurse
Bronson, Julie Y	Professional Development	Stroke Registered Nurse
Brooks, Jeffrey A	Professional Development	Progressive Care Nurse
Brown, Tarah A	Obstetrics Acute	International Lactation Consultant
Brownfield, Alisha L	Gastro-Intestinal Services	Medical-Surgical Registered Nurse
Bryant, Barbara M	Emergency Services	Emergency Nurse
Buckeye, Benjamin W	Pediatric Diabetes Services	Pediatric Nurse
Bugaieski, Kiley B	Neuroscience Intensive Care	Stroke Registered Nurse
Burden, Christina L	Patient Logistics	Rehabilitation Registered Nurse
Butler, Jennifer L	Surgery – Kidney Transplant	Clinical Transplant Coordinator
Byrd, Tyanne R	Surgical ICU	Critical Care Registered Nurse
Cahill, Sandra K	Surgery – General (Major)	Nurse Operating Room
Cambron, Nathan P	Adult Cardiac ICU	Critical Care Registered Nurse
Camp, Kimberly M	Pediatric Sedation-PICC	Pediatric Nurse
Campbell, Pamela S	Neonatal Intensive Care	Neonatal Intensive Care Nursing
Campen, Mary A	Adult Medical Specialty Unit	Medical-Surgical Registered Nurse
Carter, Angelica I	Recovery Room Services	Critical Care Registered Nurse
Carter, Julie L	Infusion Services	Pediatric Nurse
Castillo, Brandon N	Pediatric Intensive Care	Pediatric Nurse
Chandlee, Shelley L	Surgical Acute	Medical-Surgical Registered Nurse
Christopher, Dorinda R	Surgery Preadmission Center	Medical-Surgical Registered Nurse
Clark, Megan M	Surgical ICU	Critical Care Registered Nurse
Clarke, Stefanie K	Trauma Center	Pediatric Emergency Nurse
Clift, Michelle L	Emergency Services	Pediatric Emergency Nurse
Clonch, Sarah M	Adult Cardiac ICU	Critical Care Registered Nurse
Clope, Janice M	Stepdown Care Unit	Neuroscience Registered Nurse
Cobler, Arlene B	Surgical Acute	Medical-Surgical Registered Nurse
Coffman, Krissy E	College of Nursing	Inpatient Obstetric Nursing
Collins, Charcy L	Surgery – Open Heart	Nurse Operating Room
Cordes, Karyn M	Professional Development	Critical Care Registered Nurse
Cornell, Christel N	Neonatal Intensive Care	Neonatal Intensive Care Nursing
Corona, Emily A	Medical ICU	Medical-Surgical Registered Nurse

Couri, Barbara K	Surgery Preadmission Center	Ambulatory Perianesthesia Nurse
Cox, Jessica R	St. Jude Clinic	Pediatric Nurse
Craghead, Emily S	Maternal Fetal Diagnostic	Electronic Fetal Monitoring
Craig, Alecia L	Surgical Acute	Medical-Surgical Registered Nurse
Crawford, Jill A	Professional Development	Nurse Executive
Crawford, Kelli M	Obstetrics Acute	Maternal Newborn Nursing
Crawford, Olivia M	Infusion Services	Oncology Nurse
Crawford, Tracie L	Surgery Preadmission Center	Medical-Surgical Registered Nurse
Croland, Jennifer A	Hospital Administration	Nurse Executive
Crow, Kirsten R	Obstetrics Acute	Medical-Surgical Registered Nurse
Cuthbert, Jennifer A	Cardio-Thoracic Unit	Nurse Manager and Leader
Dawson, Timothy E	Pulmonary Intervention Lab	Critical Care Clinical Nurse Specialist
De Los Reyes, Marcela A	Surgical Acute	Medical-Surgical Registered Nurse
DeFord, Rebecca J	Surgery – Kidney Transplant	Clinical Transplant Coordinator
Defrance, Theresa L	Surgical ICU	Critical Care Registered Nurse
Dehn, Kimberly M	Quality And Safety	Pediatric Nurse
Delvo, Margaret F	Neuroscience Intensive Care	Critical Care Registered Nurse
Derry, Brenda S	Surgery – Kidney Transplant	Clinical Transplant Nurse
Desmarais, Kelly M	Cancer Services	Oncology Nursing (C)anada
Dexter, Samantha M	Neuroscience Intensive Care	Stroke Registered Nurse
Dickerson, Eliza L	Surgery – Open Heart	Nurse Operating Room
Dickerson, Sarah C	Pre- and Post-Op	Orthopedic Nurse
Dixon, Kathryn T	Neuroscience Intensive Care	Stroke Registered Nurse
Doerfler, Brooke E	Health Fitness/Wellness	Medical-Surgical Registered Nurse
Dotson, Kristen M	St. Jude Clinic	Pediatric Hematology/Oncology Nurse
Drennen, Lauren Nicole	Pediatric Intermediate Care	Pediatric Nurse
Dwyer, Kelli L	Wound Clinic	Wound Care Nurse
Eads, Jill	Pediatric Intensive Care	Pediatric Nurse
Estes, Bonnie K	Recovery Room Services	Neuroscience Registered Nurse
Everly, Kailey B	Six Sigma	Rehabilitation Registered Nurse
Facker, Shauna M	Nephrology Acute	Medical-Surgical Registered Nurse
Fehr, Annette L	Pediatric Sedation-PICC	Pediatric Nurse
Fiacco, Dominic M	Adult Cardiac ICU	Critical Care Registered Nurse

Field, Pamela S	Pediatric Intensive Care	Critical Care Registered Nurse
Finney, Melissa S	Surgical Acute	Medical-Surgical Registered Nurse
Fisher, Mary C	Nursing Administration	Nurse Executive, Advanced
Fitch, Nathaniel M	Ostomy/Wound Care Services	Wound Ostomy Nurse
Flavin, Kelly S	Adult Medical Specialty Unit	Medical-Surgical Registered Nurse
Fletchall, Jessica A	Emergency Services	Emergency Nurse
Flores, Edwin D	Surgical Acute	Medical-Surgical Registered Nurse
Florey, Heidi A	Surgery – Neurology	Nurse Operating Room
Flynn, Heather N	Obstetrics Acute	Medical-Surgical Registered Nurse
Ford, Kara L	Maternal Fetal Diagnostic	Diabetes Educator
Forhan, Jason	Surgical Acute	Medical-Surgical Registered Nurse
Fornoff, Diane L	Recovery Room Services	Critical Care Registered Nurse
Frame, Jennifer C	Neuroscience Intensive Care	Stroke Registered Nurse
Frederick, Laura M	Pain Clinic	Pain Management Nurse
Fricano, Molly M	Labor and Delivery Services	Inpatient Obstetric Nursing
Frietsch, Eileen M	Sleep Laboratory	Psychiatric & Mental Health Nurse
Frisby, Andrea L	Surgery Administration	Gastrointestinal Registered Nurse
Fuller, Melissa A	Quality And Safety	Critical Care Registered Nurse
Gabbert, Erin L	Professional Development	Medical-Surgical Registered Nurse
Gale, Lisa M	Pain Clinic	Oncology Nurse
Garrison, Jo A	Ambulatory Care Administration	Nurse Executive, Advanced
Gehman, Barbara Kristine	Neonatal Intermediate Care	International Lactation Consultant
Ghiorghias, Iulia	Professional Development	Medical-Surgical Registered Nurse
Gitz, Norilyn	Recovery Room Services	Medical-Surgical Registered Nurse
Gomez, Angela M	Recovery Room Services	Critical Care Registered Nurse
Gordon, Virginia R	Oncology Acute	Oncology Nurse
Gray, Laura J	Adult Medical Specialty Unit	Medical-Surgical Registered Nurse
Griepentrog, Sally A	Professional Development	Emergency Nurse
Grieve, Tiffany P	Cardio-Thoracic Unit	Medical-Surgical Registered Nurse
Gross, Amanda L	Neuroscience Intensive Care	Neuroscience Registered Nurse
Gumayan, Marian V	Physical Rehabilitation Clinic	Rehabilitation Registered Nurse
Gustafson, Amanda M	St. Jude Clinic	Pediatric Hematology/Oncology Nurse
Haage, Kristie M	Neonatal Intensive Care	Nurse Executive, Advanced

Haines, Rose A	Neonatal Intensive Care	Neonatal Intensive Care Nursing
Hamm, Kimberly S	Pain Clinic	Medical-Surgical Registered Nurse
Hangartner, Karen	Pre- and Post-Op	Ambulatory Perianesthesia Nurse
Hanson, Rachel A	Emergency Services	Emergency Nurse
Haring, Andrea M	Professional Development	Emergency Nurse
Harris, Brandy D	Neonatal Intermediate Care	International Lactation Consultant
Harris, Jessica	Recovery Room Services	Stroke Registered Nurse
Hart, Heidi E	Obstetrics Acute	Maternal Newborn Nursing
Hartseil, Leanne Nicole	Obstetrics Acute	Medical-Surgical Registered Nurse
Hartweg, Carl E	Adult Cardiac ICU	Critical Care Registered Nurse
Hauter, Bobbie J	Surgery – Open Heart	Nurse Operating Room
Heimgartner, Lisa A	Surgery Administration	Nurse Operating Room
Hemp, Diane M	Pediatric Diabetes Services	Diabetes Educator
Hendel, Sally J	Labor and Delivery Services	Electronic Fetal Monitoring
Henrekin, LaMonica L	Pediatric Intensive Care	Nurse Executive
Herrmann, Ann J	Professional Development	Pediatric Nurse
Herron, Samantha M	Neuroscience Intensive Care	Stroke Registered Nurse
Heuermann, Darla J	Cardio-Thoracic Unit	Medical-Surgical Registered Nurse
Hild, Alicia R	Patient Logistics	Medical-Surgical Registered Nurse
Hillman, Cheryl A	Neonatal Intensive Care	Neonatal Pediatric Transport
Himmel, Deborah A	Surgery – Kidney Transplant	Clinical Transplant Coordinator
Hinderliter, Julie A	Labor and Delivery Services	Inpatient Obstetric Nursing
Hines, Laura J	Cancer Services	Oncology Nursing
Hinrichsen, Lynsi N	Ambulatory Care Administration	Progressive Care Nurse
Hoehne, Diana L	Neonatal Intensive Care	Neonatal Intensive Care Nursing
Homerin, Amy A	Neonatal Intensive Care	Neonatal Intensive Care Nursing
Hopper, Angela G	Maternal Fetal Diagnostic	Electronic Fetal Monitoring
Horton, Rachel	Physical Rehabilitation Clinic	Rehabilitation Registered Nurse
Howard, Jessica L	Cardio-Thoracic Unit	Medical-Surgical Registered Nurse
Howland, Michelle D	Neonatal Intensive Care	Neonatal Intensive Care Nursing
Hoyle, Victoria R	Pediatric Acute	Pediatric Nurse
Hubbard, Wendy J	St. Jude Clinic	Pediatric Hematology/Oncology Nurse
Huette, Stephanie L	Adult Cardiac ICU	Critical Care Registered Nurse

Huff, Lisa A	Cardio-Thoracic Unit	Cardiovascular (Ed, telemetry, & stepdown)
Hulva, Elizabeth J	Obstetrics Acute	International Lactation Consultant
Hunsinger, Kerri E	Surgical Acute	Medical-Surgical Registered Nurse
Hunter, Jennifer L	Obstetrics Acute	Inpatient Obstetric Nursing
Irving, Chelsey N	St. Jude Clinic	Pediatric Hematology/Oncology Nurse
Jackson, Samantha J	Medical Acute Care Unit	Medical-Surgical Registered Nurse
Jacob, Sarah L	Wound Clinic	Wound Ostomy Nurse
Joachim, Sherry A	Professional Development	Critical Care Registered Nurse
Johnson, Kelly Ann	Gastro-Intestinal Services	Gastrointestinal Registered Nurse
Jones, Angie D	Medical ICU	Critical Care Registered Nurse
Judy, Chelsey K	Neuroscience Intensive Care	Stroke Registered Nurse
Kalina, Sarah N	Professional Development	Pediatric Nurse
Kauffman, Jacquie Marie	Surgical Acute	Rehabilitation Registered Nurse
Kelch, Marcia J	Labor and Delivery Services	Inpatient Obstetric Nursing
Kemp, Debra E	Parish Nurse	Faith Community Nursing
Kenser, Debbie A	Radiology Nursing	Nurse Operating Room
Kettleborough, Aaron J	Medical ICU	Critical Care Registered Nurse
Khairallah, Toufic S	Professional Development	Progressive Care Nurse
King, Meghan C	Neuroscience Intensive Care	Stroke Registered Nurse
Klassen, Anna J	Ostomy/Wound Care Service	Medical-Surgical Registered Nurse
Klein, Tiffany A	Pediatric Hematology/Oncology	Pediatric Oncology Nurse
Klyber, Melissa A	Ostomy/Wound Care Services	Wound Ostomy Nurse
Knaub, Lisa K	Neonatal Intensive Care	Neonatal Intensive Care Nursing
Knoblauch, Lori S	Neonatal Intermediate Care	Pediatric Nurse
Knobloch, JayLyn M	Cardio-Thoracic Unit	Medical-Surgical Registered Nurse
Knobloch, Kendra M	Cardio-Thoracic Unit	Medical-Surgical Registered Nurse
Koch, Aimee E	Adult Cardiac Int Care Unit	Critical Care RN – Cardiac Surgery
Kominkiewicz, Amy M	Obstetrics Acute	International Lactation Consultant
Krieghauser, Laura L	Stress Testing	Trauma Registered Nurse
Krile, Lauren S	Surgical Acute	Medical-Surgical Registered Nurse
Kupferschmid, Megan E	Pediatric Intensive Care	Critical Care Registered Nurse
Lamer, Jaclyn R	Pediatric Hematology/Oncology	Pediatric Nurse
Land, Rachel C	Gastro-Intestinal Services	Medical-Surgical Registered Nurse

Langdon, Michelle E	Cancer Services	Oncology Nursing
Lanier, Theresa M	Neonatal Intensive Care	Neonatal Intensive Care Nursing
Lawcock, Rebecca A	Neuro Med-Surg Acute-3500	Neuroscience Registered Nurse
Lee, Madeline M	Neuroscience Intensive Care	Stroke Registered Nurse
Lehman, Marie A	Nursing Administration	Nurse Executive, Advanced
Lesage, Amanda	Quality And Safety	Stroke Registered Nurse
Lindberg, Danielle N	Professional Development	Pediatric Nurse
Liner, Mary A	Labor and Delivery Services	Inpatient Obstetric Nursing
Linthicum, Melissa S	Surgery-Pancreatic Transplant	Clinical Transplant Coordinator
Litwiller, Carol A	Surgical Acute	Medical-Surgical Registered Nurse
Litwiller, Karla C	Women's Center	International Lactation Consultant
Lucas, Gayle A	Professional Development	Clinical Nurse Specialist, Core
Luczkowiak, Amanda S	Interventional Radiology	Inpatient Obstetric Nursing
Lustig, Kerri L	Neuroscience Intensive Care	Stroke Registered Nurse
Luthi, Daniel R	Pediatric Intermediate Care	Pediatric Nurse
MacGregor, Scott D	Emergency Services	Nurse Executive
Madigan, Hayley M	Parish Nurse	Medical-Surgical Registered Nurse
Madigan, Kathryn J	Women's Center	International Lactation Consultant
Mahaffey, Ashley M	Almost Home Kids	Pediatric Nurse
Mahoney-Daugherty, Daryl S	Surgical Acute	Medical-Surgical Registered Nurse
Main, Christina K	Pulmonary Intervention Lab	Critical Care Registered Nurse
Maleki, Nisa	Adult Cardiac Int Care Unit	Critical Care RN – Cardiac Surgery
Malin, Christopher G	Cardio-Thoracic Unit	Medical-Surgical Registered Nurse
Malueg, Amanda L	Pre- and Post-Op	Medical-Surgical Registered Nurse
Mandreza, Jo Ann G	Adult Medical Specialty Unit	Medical-Surgical Registered Nurse
Marshall, Renee S	Trauma Service	Nurse Executive
Martin, Cindy A	Almost Home Kids	Maternal Newborn Nursing
Martin, Samantha Marie	Critical Care Services	Critical Care Registered Nurse
Marvin, Mary A	Surgery Preadmission Center	Adult Nurse Practitioner – ANCC
Matson, Julie M	Trauma Center	Emergency Nurse
McConnell, Ellen M	Surgical Acute	Medical-Surgical Registered Nurse
McCool, Diana C	Neonatal Intensive Care	Neonatal Intensive Care Nursing
McMahan, Tammy L	Pre- and Post-Op	Medical-Surgical Registered Nurse

McVicker, Dana J	College of Nursing	Progressive Care Nurse
Mehl, Amy L	Labor and Delivery Services	Inpatient Obstetric Nursing
Miles, Barbara A	Physical Rehabilitation Clinic	Accredited Case Manager
Minehan, Allison L	Cardio-Thoracic Unit	Progressive Care Nurse
Minter, Sarah M	Adult Cardiac Int Care Unit	Critical Care Clinical Nurse Specialist
Moore, Marni M	Neuro Med-Surg Acute-3500	Medical-Surgical Registered Nurse
Morris, Cassandra J	Professional Development	Pediatric Nurse
Morris, Terra C	Professional Development	Medical-Surgical Registered Nurse
Mosher, Allison E	Neuroscience Intensive Care	Stroke Registered Nurse
Muir, Todd H	Pre- and Post-Op	Ambulatory Perianesthesia Nurse
Myers, Eric R	Neonatal Intermediate Care	Neonatal Intensive Care Nursing
Nee, Christa R	Adult Medical Specialty Unit	Medical-Surgical Registered Nurse
Nelson, Amanda J	Professional Development	Medical-Surgical Registered Nurse
Nussbaum, Melissa M	Ostomy/Wound Care Services	Wound Ostomy Nurse
Ober, Stephanie A	Neonatal Intensive Care	Neonatal Intensive Care Nursing
O'Connor, Rebekah L	Pediatric Acute	Pediatric Nurse
Oderwald, Tenille M	Cancer Services	Breast Patient Navigator – Cancer
Oliver, Marjorie L	Professional Development	Critical Care Registered Nurse
Orr, Karla D	Health Fitness/Wellness	Trauma Registered Nurse
Orr, Nancy A	Neonatal Intermediate Care	Low-Risk Neonatal Nursing
Orr, Virginia K	Neonatal Intermediate Care	Neonatal Intensive Care Nursing
Otto, Danielle J	Neonatal Intensive Care	Neonatal Intensive Care Nursing
Owen, Haley R	Gastro-Intestinal Services	Emergency Nurse
Owens, Christina A	Short Stay Unit	Medical-Surgical Registered Nurse
Padagas, Julith T	Dialysis Services	Medical-Surgical Registered Nurse
Park, Sherrie L	Surgery – Orthopedic	Medical-Surgical Registered Nurse
Peck, Bradley M	Adult Cardiac ICU	Critical Care RN – Cardiac Surgery
Pedersen, Caite L	Adult Medical Specialty Unit	Medical-Surgical Registered Nurse
Perdue, Krystal D	Medical ICU	Critical Care Registered Nurse
Perkins, Britni K	Pre- and Post-Op	Medical-Surgical Registered Nurse
Peters, Stacey J	Surgery Preadmission Center	Neuroscience Registered Nurse
Phelps, Jill R	Surgery – Orthopedic	Nurse Operating Room
Phothisene, Aimee I	Surgical Acute	Medical-Surgical Registered Nurse

Piper, Melissa A	Pre- and Post-Op	Cardiac/Vascular Nurse
Pittman, Brandy S	Nursing Administration	Medical-Surgical Registered Nurse
Price, Erin J	Nursing Administration	Pediatric Nurse
Quezada Manzo, Larissa A	Ante-Partum	Inpatient Obstetric Nursing
Ralser, Tama M	Cardiac Catheterization Services	Progressive Care Nurse
Rasmuson, Jolinda D	Pediatric Diabetes Services	Diabetes Educator
Reardon, Deborah K	Cardio-Thoracic Unit	Medical-Surgical Registered Nurse
Reed, Lacey N	Neuroscience Intensive Care	Critical Care Registered Nurse
Reed, Sarah E	Adult Medical Specialty Unit	Medical-Surgical Registered Nurse
Reilley, Lindsey Sue	Pediatric Intensive Care	Pediatric Nurse
Richardson, Lisa M	Obstetrics Acute	International Lactation Consultant
Ritzi, Adina J	Patient Logistics	Medical-Surgical Registered Nurse
Rodriguez, Debra M	Surgical Acute	Medical-Surgical Registered Nurse
Roe, Theresa L	Neuro Med-Surg Acute-3500	Wound Care
Rogy, Lindsay Beth Vandiver	Emergency Services	Emergency Nurse
Rohlwing, Emily A	Labor and Delivery Services	Inpatient Obstetric Nursing
Rohman, Laura A	Patient Logistics	Medical-Surgical Registered Nurse
Romersberger, Denise S	Pre- and Post-Op	Ambulatory Perianesthesia Nurse
Roth, Sherilyn A	Cardio-Thoracic Unit	Medical-Surgical Registered Nurse
Routh, Samantha J	Radiation Therapy	Oncology Nurse
Ruder, Teresa K	Surgery – General (Major)	Nurse Operating Room
Rumbold, Julie M	Neonatal Intermediate Care	Maternal Child Nursing
Runyon, Tina M	Physical Rehabilitation Clinic	Rehabilitation Registered Nurse
Sanchez, Tamera R	Professional Development	Ambulatory Perianesthesia Nurse
Schaidle, Barbara A	Recovery Room Services	Post Anesthesia Nurse
Schaidle, Jodi L	Surgery – General (Major)	Nurse Operating Room
Schimmelpfenning, Deborah P	Ostomy/Wound Care Services	Wound Ostomy Nurse
Schini, Karen L	Dialysis Services	Medical-Surgical Registered Nurse
Schnibben, Angela M	Nursing Administration	Medical-Surgical Registered Nurse
Schroderus, Lauren J	Orthopedics Acute	Medical-Surgical Registered Nurse
Schuck, Lisa T	Quality And Safety	Critical Care Registered Nurse
Schuster, Stephanie A	Cardio-Thoracic Unit	Medical-Surgical Registered Nurse
Scott, Ashley L	Pulmonary Clinic	Clinical Research Coordinator

Scott, Dona J	Medical ICU	Critical Care Registered Nurse
Scott, Rachel C	Neuro Med-Surg Acute-3500	Neuroscience Registered Nurse
Seaboch, Lisabeth E	Ostomy/Wound Care Services	Wound Ostomy Nurse
Shorthair, Amy L	Neuro Med-Surg Acute-3500	Trauma Registered Nurse
Sivori, Stephanie A	Labor and Delivery Services	Inpatient Obstetric Nursing
Slotter, Jena	Surgical Acute	Medical-Surgical Registered Nurse
Smith, Julia B	Surgery Preadmission Center	Ambulatory Perianesthesia Nurse
Smith, Kathryn J	Nephrology Acute	Medical-Surgical Registered Nurse
Smith, Lisa A	Labor and Delivery Services	International Lactation Consultant
Smith, Sean B	Wound Clinic	Hyperbaric Registered Nurse
Smock, Jessie S	VAD Program	Critical Care Registered Nurse
Snider, Wendy M	Physical Rehabilitation Clinic	Rehabilitation Registered Nurse
Somogyi, Sara M	Recovery Room Services	Pediatric Nurse
Souba, Laura L	Pediatric Intensive Care	Critical Care Registered Nurse
Speiden, Janine M	Stepdown Care Unit	Wound Care
Sperry, Jessica L	Short Stay Unit	Medical-Surgical Registered Nurse
Spurgeon, Christina M	Neonatal Intensive Care	Neonatal Intensive Care Nursing
Stanley, Kaylee Chantel	Neonatal Intensive Care	Neonatal Intensive Care Nursing
Stear, Julie M	Pediatric Diabetes Services	Diabetes Educator
Stein, Ann M	Emergency Services	Emergency Nurse
Steiner, Sarah K	Gastro-Intestinal Services	Gastrointestinal Registered Nurse
Stephens, Amy L	Pre- and Post-Op	Medical-Surgical Registered Nurse
Stoller, Katelyn S	Professional Development	Informatics Nurse
Stout, Cynthia D	Almost Home Kids	Pediatric Nurse
Stroemer-Walljasper, Michele R	Surgical Acute	Medical-Surgical Registered Nurse
Strunk, Kelly C	VAD Program	Critical Care Registered Nurse
Suelter, Marianne	Nephrology Acute	Medical-Surgical Registered Nurse
Swank, Carol L	College of Nursing	Emergency Nurse
Swingler, Abigail N	Orthopedics Acute	Medical-Surgical Registered Nurse
Thacker, Karen Elizabeth	Nursing Administration	Nurse Executive, Advanced
Thiemann, Andrea M	Partial Hospital – Psychiatric	Psychiatric & Mental Health Nurse
Thomas, Alexis M	Pediatric Intensive Care	Critical Care Registered Nurse
Thurston, Erin R	Pediatric Acute	Pediatric Nurse

Tomblin, Hannah R	Adult Medical Specialty Unit	Medical-Surgical Registered Nurse
Trau, Deborah A	Nursing Administration	Nurse Executive, Advanced
Tucker, Sharon S	Surgery Preadmission Center	Nurse Operating Room
Ulrich, Lori L	Surgery Preadmission Cent	Post Anesthesia Nurse
Vance, Sarah E	Trauma Center	Sexual Assault Nurse Examiner – Adult
Vancil, Nicole M	Neonatal Intensive Care	Neonatal Intensive Care Nursing
Varness, Wendy A	Orthopedics Acute	Medical-Surgical Registered Nurse
Verplaetse, Jessica E	College of Nursing	Neonatal Intensive Care Nursing
Vlaminck, Lindsay E	Cancer Services	Breast Patient Navigator – Cancer
Voelker, Erin E	Recovery Room Services	Critical Care Registered Nurse
Voorhees, Jennica N	Pediatric Hematology/Oncology	Pediatric Nurse
Walker, Dizzaray M	Obstetrics Acute	RNC-MM Maternal Newborn Nursing
Warning, Stacy L	Labor and Delivery Services	Inpatient Obstetric Nursing
Watt, Carrie A	Pediatric Intensive Care	Critical Care Registered Nurse
Welborn, Karen L	Surgery – Kidney Transplant	Nurse Executive, Advanced
Wessel, Heather A	Professional Development	RN-COB obstetrics
Whetsell, Cynthia L	Surgical Acute	Medical-Surgical Registered Nurse
Whitney, Cassie J	Nephrology Acute	Medical-Surgical Registered Nurse
Wilcoxon, Mary E	Surgery Preadmission Center	Nurse Operating Room
Willenborg, Nicole R	Cancer Services	Oncology Nurse
Wilson, Hayley E	Recovery Room Services	Critical Care RN – Cardiac Surgery
Wilson, Katrina M	Surgery Preadmission Cent	Nurse Operating Room
Wilson, Lasonia R	Physical Rehabilitation Clinic	Accredited Case Manager
Woodson, Stephanie L	Emergency Services	Emergency Nurse
Woolard, Brian M	Surgery – Orthopedic	Medical-Surgical Registered Nurse
Wright, Amy L	Professional Development	Orthopedic Nurse
Wright, Shelly L	Pain Clinic	Medical-Surgical Registered Nurse
Yates, Jenna N	College of Nursing	Rehabilitation Registered Nurse
Zentko, Joe S	Adult Cardiac ICU	Critical Care Registered Nurse
Zobrist, Justin D	Gastro-Intestinal Services	Emergency Nurse
Zuercher, Anne E	Recovery Room Services	Flight Registered Nurse

DAISY AWARDS

The family of Patrick Barnes created the DAISY Award for Extraordinary Nurses in his memory to recognize and thank nurses, the often-unsung heroes, for the gifts they give their patients and families every day.

Nurses at OSF Saint Francis and OSF HealthCare Children's Hospital of Illinois are nominated for the DAISY Award in recognition of their commitment to the highest standards of nursing excellence and for making a significant difference in the lives of the patients and families they serve. OSF Saint Francis and OSF Children's Hospital receive an average of 150 to 200 DAISY nominations each month – one of the highest numbers of nominations in the nation!

DAISY winners

Here are some of our most recent DAISY winners and quotes from those who nominated them.



Kirstin Osborn, RN

October 2022
Oncology Services

“

I am a writer by trade, yet words fail me when I try to express how much I admire, love and respect my breast health navigator, Kirstin Osborn.

I finally understand the term “Godsend.” It’s someone or something that is sent by God to help you. Kirstin was my Godsend. I told her several times that I was amazed by how well she did her job. Her answer was always the same, “I just love what I do.” “It shows,” I’d say. “It shows.” Ephesians 4:15 talks about “speaking the truth in love.” That is the essence of Kirstin Osborn. She always speaks the truth and does it in love.

”

“

My sister, brother-in-law and I brought our sister to the emergency department for what turned out to be a very serious UTI. She has dementia and was very uncomfortable and upset at being there.

Ethan was very respectful of her and very patient even when she pulled out her IV. She was not the easiest patient to handle, but Ethan was very patient and empathetic, even when she fought physically and verbally when he was trying to handle her procedures. He remained cool throughout everything. We appreciate the care that he provided in what was not an easy situation.

”



Ethan Sperry, RN

November 2022
Clinical Resource Team



Rebecca Wisler, RN

December 2022
Labor & Delivery

“

Rebecca was our nurse on the day I delivered our son. We were so heartbroken after we learned we had lost him a few days earlier, and I was dreading the physical and emotional pain of going through labor to deliver a baby that we knew wouldn't be going home with us.

I will always remember and be grateful for the time she took to take beautiful pictures, make a special ornament, get handprints and footprints, and provide compassionate care to me and [my son]. I hope every family in this situation has a nurse like Rebecca to help them through it.

”

“

Courtney is an extremely compassionate nurse who took incredible care of my mother-in-law when she was in the hospital. She ensured that her pain was adequately treated and truly cared for her every need.

Unfortunately, things took a turn for the worse, and my mother-in-law died suddenly and unexpectedly. After my mother-in-law passed away, she spent a great amount of time with my father-in-law while he waited for his kids to arrive at the hospital. OSF HealthCare is lucky to have an amazing nurse like her, who demonstrates empathy, compassion and strength daily while caring for her patients.



Courtney Johnson, RN

January 2023
Surgical Acute

”



Emma Sauder, RN

February 2023
Adult Cardiac ICU

“

My mother was in the ICU following a massive heart attack and the placement of two stents. That night, around 10:30 p.m., she had a vasovagal event. Thankfully, our nurse was in the room with her and called for additional help.

These are the moments where a nurse's care and expertise go beyond caring just for the body and touch a patient's soul. These are the moments that bring a calming trust to the patient and family. Thank you to this amazing, sweet nurse for caring so much.

”

“

Jessica was my mom’s nurse for only about four hours before she was transported to OSF Richard Owens Hospice Home, but the impact Jessica made has resounded with my family since then.

I asked my brothers if there was anything they wanted me to add to this nomination in regard to Jessica. They both came back with the words “so compassionate, genuine and calming.” One thing that stood out to all of us was – as we were leaving for hospice home, Jessica said, “I will pray for you and your family.” Those words meant the world to us.

”



Jessica Richards, RN

March 2023
Short Stay Unit



Abbi-Jo Marcotte, RN

April 2023
Emergency Services

“

My mom was brought to the emergency department by ambulance. Abbi greeted me with a smile, introduced herself and explained to me what they were going to do.

One time, she came in, and I started to tear up. My daughter’s fiancé had just passed away suddenly. Abbi was so kind to listen to me, and we chatted for a second. That was all I really needed at that time, and Abbi was there. She was doing her job and did not have to check on me while mom was testing.

Abbi is a fantastic nurse. She was so gentle and kind to mom. I cannot thank Abbi enough for all the kindness she has shown us.

”

“

We received news that no parent ever wants to hear. There was concern that our son, who is 14, had a lesion in his brain. He was admitted to general pediatrics with so much uncertainty and fear. One nurse in particular made such a scary stay bearable and, dare I even say, pleasant. Her name is Breonna Orrick.

We will never forget that day, as it was one of the scariest days of our lives. However, we will also never forget Bre, who we truly felt was an angel sent from God to help us continue to smile and continue to be strong. Thank you, Bre, from the bottom of our hearts, for your care and compassion! You have made an impact on us that we will take with us always.

”



Breonna Orrick, RN

May 2023
Pediatric Acute



Serena Meiss, RN

June 2023

Adult Cardiac ICU

“

Serena Meiss saved my grandpa’s life. He was in for an aortic aneurysm, and his odds for surgery didn’t look good. He was intubated and unable to speak, so we had to make the choice to continue with the surgery or not. We knew that the road to recovery would be a hard one, and we made the choice to decline the surgery. As we made this heartbreaking decision, Serena told us she could lower Papa’s sedation so that we could speak to him.

Because of her consideration and ability to put herself in the shoes of others, my grandpa is alive today. Not only that but just four months post-surgery, he’s gone from bed-restricted in a nursing home to walking around independently back in his own home.

”

“

Mom was struggling with recovering from a c-section, along with baby being in the NICU. Sunday morning, we had Bailee as our nurse, and we were instantly blown away by her kindness, honesty and empathy toward Mom.

She answered hundreds of questions about mom and baby, was personable, and was attentive, ensuring we stayed on top of mom’s blood pressure. She comforted and eased family members throughout the day. Bailee was a great nurse, and we are so grateful for the care she provided for our family. It was relieving to know Mom and baby were in such good hands.

”



Bailee Maas, RN

July 2023

Labor & Delivery

“

My wife had been rushed to OSF Saint Francis for a delayed post-partum hemorrhage. She had an emergency procedure and was admitted. Bre was waiting for us in the room. She was so kind to my wife and ensured she had everything she needed.

My wife and I appreciate all the compassion you showed. You put us at ease in a difficult situation and got her on the road to recovery. You are an amazing nurse with a great heart! Your kindness and patience were a blessing after all the chaos we experienced. Thank you so much for everything!

”



Breanne Williams, RN

August 2023

Clinical Resource Team

DEDICATED EDUCATION UNITS

The Dedicated Education Unit (DEU) uses nurses as clinical instructors to prepare themselves and others for expanded roles and career development using existing resources. The instructors work closely with the student nurses on each shift as part of their normal patient load.

The structure of a DEU is flexible because it must be able to meet the needs of specific clinical environments and work within available resources. There are six guiding principles of DEUs that, when taken in totality, will generate a sense of belonging in clinical environments for students, clinical staff and academics:

1. Clinicians and academics partner together and accept each other's strengths – clinicians are expert practitioners, and academics are expert educators.
2. Relationships between clinicians and academics are built on mutual trust, respect and open communication.
3. Through close relationships, clinicians and academics develop a robust, collaborative, collegial partnership between OSF HealthCare and college.
4. Academics, clinicians and students partner for collaborative learning and teaching.
5. All individuals involved in the DEU are prepared and understand their roles, responsibilities and activities.
6. There is ongoing academic and clinical practice development of the academic and clinical staff and the students.

Quotes

“

It helped me become more confident in my skills and patient interaction. The DEU was a huge impact on why I am working at OSF Saint Francis.

S2 Saint Francis Medical Center
College of Nursing DEU Student

”

“

Being able to follow a nurse for a full 12-hour shift really brings out the beauty of the nursing profession. I would not be where I am without the DEU.

S2 Saint Francis Medical Center
College of Nursing DEU Student

”

“

Being a DEU instructor gives me an opportunity to advance my own knowledge and skills as a nurse and a teacher and keeps me up to date on procedure updates. It helps the students learn time management and prioritization and gives them more responsibilities and opportunities than they would have in a traditional clinical setting.

Lauren, 4Surg DEU Instructor

”

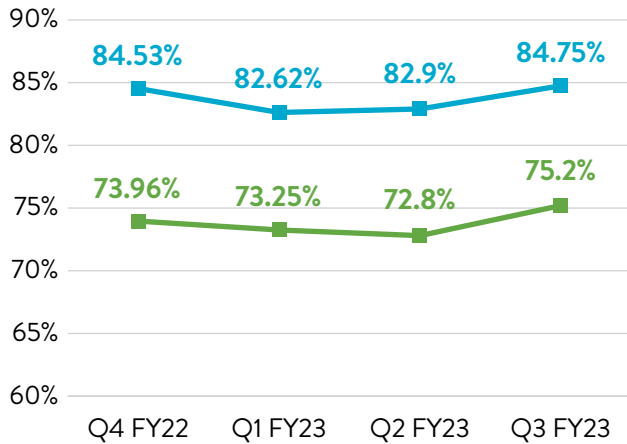
2023 Dedicated Education Unit Instructors

Name	Department
Bruell, Chloe	Medical Acute Care Unit
Davis, Darcie	Medical Acute Care Unit
Eisenbarth, Madison	Medical Acute Care Unit
Stewart, Hannah	Medical Acute Care Unit
Uphoff, Ashley	Medical Acute Care Unit
Adolfson, Brooke	Neurology Acute
Enriquez, Arianna	Neurology Acute
Jones, Kole	Neurology Acute
McElyea, Sara	Nephrology Acute
Melton, Ashleigh	Nephrology Acute
Pisano, Courtney	Nephrology Acute
Snodgrass, Lindsey	Nephrology Acute
Thies, Mallory	Nephrology Acute
Kramer, Lauren	Surgical Acute
Mahoney-Daugherty, Daryl	Surgical Acute
Minteer, Erin	Surgical Acute
Richardson, Chelsea	Surgical Acute
Lardizabal, Mary	Cardiothoracic
Lewis, Jamie	Cardiothoracic
Lewis, Tarynn	Cardiothoracic
Marvel, Jason	Cardiothoracic
Rosenthal, Erin	Cardiothoracic
Patridge, Alaina	Cardiothoracic
Schaumburg, Lauren	Cardiothoracic
Schleich, Tamatha	Cardiothoracic

MEASURING OUR SUCCESS

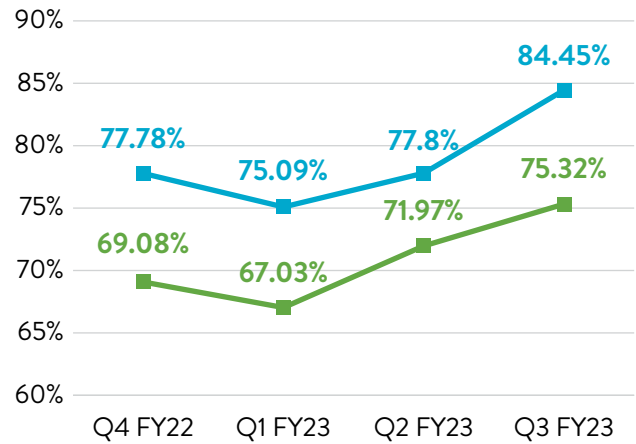
What do our patients think of OSF Saint Francis nurses?

HCAHPS RNs
(Inpatient)



- RNs treat patients with courtesy and respect
- RNs listen carefully

EDCAHPS RNs
(Emergency Department)



- RNs treat patients with courtesy and respect
- RNs listen carefully

What do our patients say when they return surveys?

“

The team responsible for the testing, from the nurses to the doctor, was top-notch! They were so kind and spoke to my son and kept him informed the entire time. They made our first experience at OSF worth the drive. They were all so kind and considerate.

”

“

During my hospital stay, I had my third child. It was my first birth experience at OSF, and the nurses were wonderful. They were attentive, friendly and knowledgeable. I would recommend OSF to any pregnant mom.

”

“

I had a serious back operation (my sixth). Went home, and a couple of days later, I fell and went by ambulance to the emergency department. Was admitted for a week and had wonderful care. The nursing staff was top-notch! Follow-up with home therapy. Great assistance and care.

”

RESEARCH, PUBLICATIONS AND PRESENTATIONS

Research

Contextualizing Nursing Needs for Development of Retention-Support App (started 8/29/23) ongoing – site PI: Karyn Cordes MSN, RN, CCRN.

Development and Pilot Testing of Virtual Standardized Patients for Triage Training (started 8/29/23) ongoing, site PI: Ann Stein BSN, RN.

Impact of virtual reality simulation for teaching high-risk, emergent situations in women's health (started 4/6/23) ongoing site PIs: Sarah Barnes BSN, RN; Taylor Lind BSN, RN; Amy Jo Williamson DNP, RN; Marie Lehman DNP, RN, NEA-BC; and Brooke Kaiser MSN, RN.

Research day presentations

Prenatal Assessment using standardized patients in baccalaureate nursing education. Jessica Verplaetse, RN, PhD; and Sheri Streitmatter, RN, MSN.

Implementation of an Interactive Training Experience for Novice Nurses One Month after Hire Date. Jennifer Van Autre, DNP, RN; Desi Walker, MSN, RN, RNC-MNN; and Robyn Goetze Bradley, MSN, RN.

Research residency. Rebecca Parizek, PhD, RN, CNL; and Christina Garcia, PhD, RN, NE-BC.

Doctor of nursing practice projects

Implementation of a Micro-Debriefing Bundle on a General Pediatric Unit – Brittany Williams.

Implementation of Updated Screening Tool to Identify Human Trafficking Victims within the Emergency Department – Laura Flinn.

Virtual Discharge to Enhance Discharge Timeliness and Improve Hospital Throughput – Andrea Harlan.

Presentations

Implementation and impact of an Oncology Nurse Navigator Led Survivorship Program in a Hospital Outpatient Setting poster presentation by Catherine Bailey BSN, RN. (AONN Conference – November 2023)

Breaking down barriers breakout session presentation by Laura Frederick, BSN, RN, CMGT-BC, PMGT-BC. (ASPMN Conference – September 2023)

Understanding Gestational Surrogacy in Illinois presentation by Cheyanne Hainline BSN, RN, CLS. (AWHONN IL Conference – October 2023)

GI Pearls: A Panel Presentation with Kelly Johnson, BSN, RN, CGRN; and Breanna Dugan, BSN, RN. (2023 Gastroenterology Nursing & Surgical Tech Conference – November 2023)

Coaching Nursing Students virtual podium presentation by CJ Wright-Boon, MSN, RN. (Health Professions Educators Conference, sponsored by Magna Publications – August 2023)

Publications

Croland, J., Overton, S., Nimtz-Rusch, K., Emmerling, S., Wiegand, L. (March 2023). *Implementation of a violence risk assessment and interventions aimed at the prevention of patient-perpetrated violent events across care settings*. The Journal of Nursing Administration. 53(3):168–174. doi.org: 10.1097/NNA.0000000000001263.

Bailey, C., Rappleyea, M., T. Oderwald & C. Garcia (2022). *Experiences of Appointed Health Care Power of Attorney Agents for Lung Cancer Patients from Nurse Navigator Led Advance Care Planning Discussion*. *Journal of Oncology Navigation and Survivorship*, 13(11), 362–368.

Zhu, X., Zhang, P., Kang, H., Marla, L., Robles Granda, M. I., Ebert-Allen, R. A., Stewart de Ramirez, S., Oderwald, T., McGee, M., & Handler, J. A. (2023). *Derivation of a unique, algorithm-based approach to Cancer Patient Navigator Workload Management*. *JCO Clinical Cancer Informatics*, (7). <https://doi.org/10.1200/cci.22.00170>

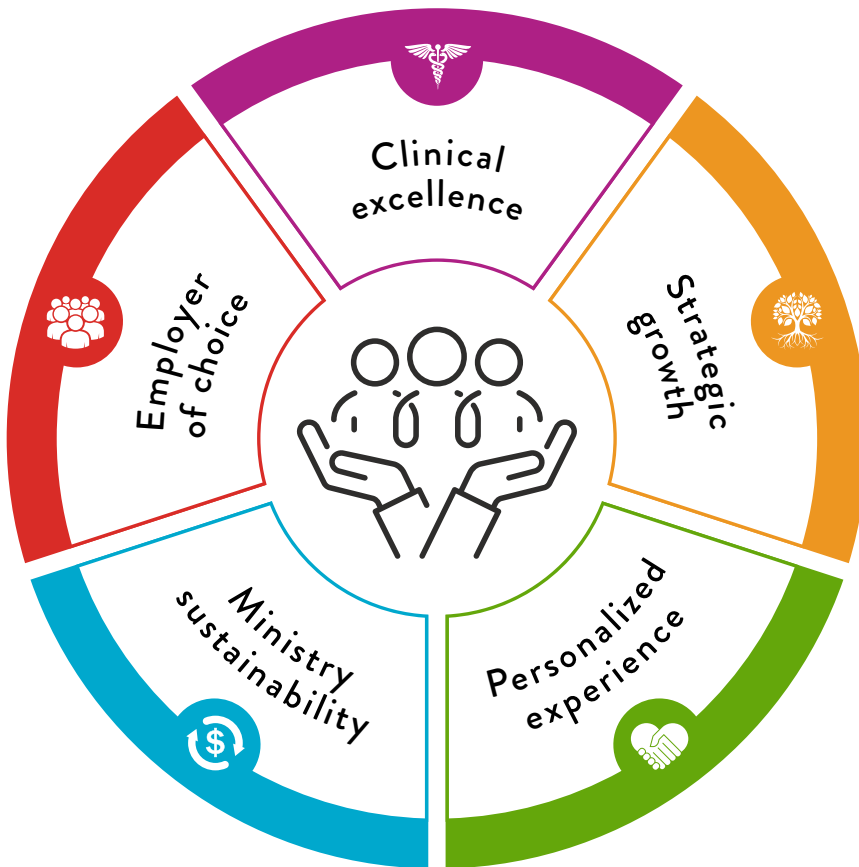
Tripathi, S., Gehlbach, J., Henrekin, L., Neavor, A., Woods-Duwendack, T., & Capati, A. (2022). 1266: *CLABSI maintenance bundle and CLABSI rates: Is there more to it than compliance?* *Critical Care Medicine*, 50(1), 633–633. <https://doi.org/10.1097/01.ccm.0000811388.61061.1b>

Wright-Boon, C.J. (2023). *Lessons Learned While Coaching Nursing Students During and After the Pandemic: An Experiential Story*. Faculty Focus, an online publication from Magna Publishing.

Wright-Boon, C.J. (2023). *The Peanut Butter to My Jelly: A Work Friend is Everything*. Served as secondary author. Faculty Focus, an online publication from Magna Publishing.

OSF STRATEGIC PLAN

FY23 Strategy Summary



- Culture of clinical excellence
- Delivery system redesign

- Partnerships
- Community engagement

- OSF Way – Scheduling transformation
- Genomics and personalized medicine
- Health equity and social drivers of health
- Digitally enhanced new models of care

- Diversify revenue streams
- Radical efficiency
- Philanthropy
- Expand value-based relationships

- Talent-centric hiring practices
- Flexible work environments
- Progressive benefits with flexibility
- Robust organizational development
- OSF Way – Compassion
- Diversity and inclusion
- Transformation of learning

PROFESSIONAL GOVERNANCE

Shared Governance at OSF Saint Francis

At OSF Saint Francis, all nursing Mission Partners are a part of professional governance. Professional governance is the structure that allows nurses to regulate and guide their practice. This structure aims to enhance patient safety and outcomes while fostering a culture of professionalism and ongoing improvement in nursing practice.

We are proud to have department-level unit councils run by frontline nurses. The chairs of these unit councils sit on the OSF Saint Francis Professional Nursing Congress (PNC) and participate in decision-making, collaboration with the CNO, nursing peer review, employee engagement and retention and staffing advisory.

OSF Saint Francis also has frontline nursing representatives participating in OSF HealthCare Clinical Practice Councils. This professional governance structure allows decision-making and communication to flow from the frontline Mission Partners to the OSF Ministry and back.



NURSE MIXERS

Our nursing staff periodically hosts fun, free mixers designed to offer nurses of any age or education level a chance to explore nursing opportunities at OSF HealthCare. The mixer allows attendees to network and have casual conversations with experienced RNs while enjoying refreshments.



CARPE NOCTEM

Formed in 2015, the Carpe Noctem Committee is a group of individuals who have come together to ensure night shift Mission Partners have support through education, rounding and fun activities!

Lag night

During the night of daylight savings, our committee pairs with the administration to serve a meal to Mission Partners working the extra hour on the night shift. Lag night 2023 saw more than 500 Mission Partners served by our executive team and nursing leadership in the first hour.



INNOVATION

Virtual Nursing

OSF Saint Francis has shifted the admission and discharge process for all patients, including patients arriving and discharging from home, assisted living or a skilled nursing facility, from the bedside nurse to a virtual nurse through this innovative technology. This initiative provides the bedside nurse with more opportunities to continue providing direct care and more time with other patients to help improve the delivery of care.

With the virtual nurse completing the admission and discharge with the patient, there are no interruptions or distractions to the virtual nurse's time with the patient, enhancing the experience and providing the patient with more opportunities for feedback and questions.

After the rollout of the Virtual Nursing project for discharging patients, there has been a sustained significant increase in four key areas of Patient Satisfaction:

Staff discussed help available to you when you left

You received information about the symptoms or problems to watch for

You had a good understanding of the purpose of your medications

You had a good understanding of managing your health

Reduced Weekends by Seniority

Members of the Professional Nursing Congress brought their ideas to our CNO, Jennifer Croland, to lessen nurses' weekend commitment to help with retention and recruitment. Other nurses across the OSF Ministry gave similar suggestions to their respective CNOs. These nurse executives, working with human resources, crafted a proposal that benefitted new and current Mission Partners. The model now in effect is as follows:

- Zero to four years of service: four weekend shifts in a six-week plotter
- Four to 10 years of service: three weekend shifts in a six-week plotter
- 10 to 15 years of service: two weekend shifts in a six-week plotter
- 15+ years of service: no weekend shift commitment

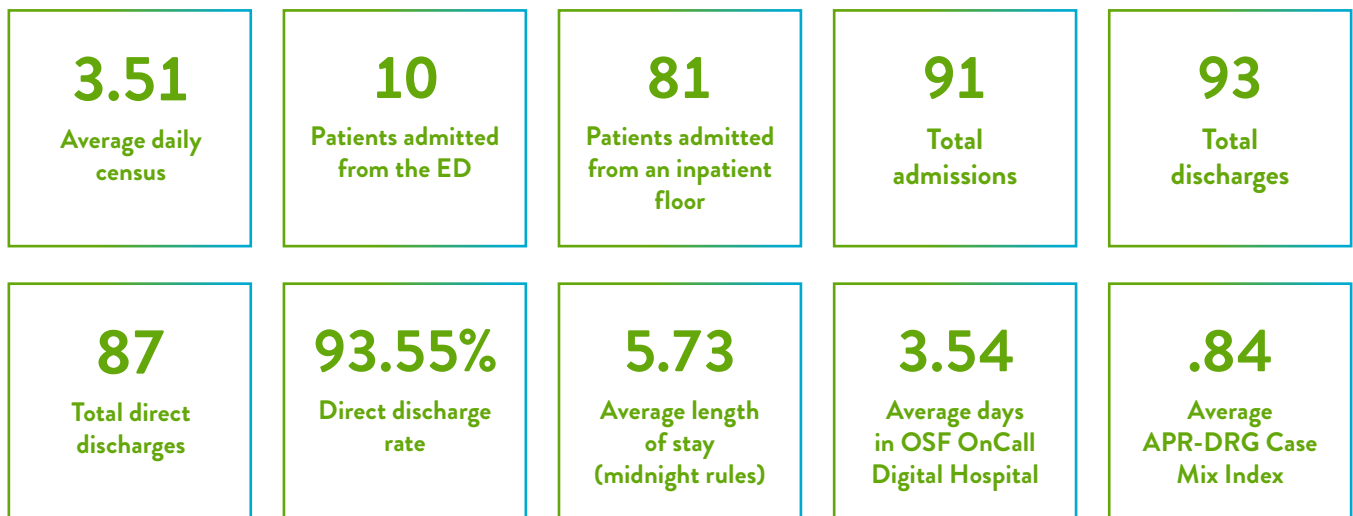
OSF OnCall Digital Hospital

OSF OnCall Digital Hospital started enrolling patients in August 2022. This innovative program combines virtual and in-home care for acutely ill patients requiring hospitalization, assisting patients in their homes and leveraging resources to help offset hospital census and contribute to throughput for more acutely ill patients.

In the first year, OSF OnCall Digital Hospital cared for 200 patients without hospital-acquired conditions or infections. It demonstrated a reduced length of stay of around three days for acutely ill hospitalized patients, almost two days lower than an average hospital stay.



Utilization Metrics FY24 Q1



Celebrating innovators across the Ministry

When Ann Herrmann and Sam Monk took on roles as clinical education scholars at OSF Children's Hospital, they were tasked with developing innovative educational content for frontline Mission Partners. They saw an opportunity in Elemenio Health, a training and communication application.

"We were using Elemenio, brought in by OSF Innovation, as an online library of information for our caregivers to easily access, such as performance standards and guidelines," said Ann. "But we quickly realized it could be so much more than that."

Traditionally, orientation and ongoing education have been completed using binders of information and in-seat learning. Frontline caregivers also go directly to Ann and Sam to ask questions and find resources, but the clinical education scholars are not always available.



"We saw the app as an opportunity to transition our education model to a format for today's generation," said Sam. "This platform can help us answer questions, disseminate education and orientation and provide real-time information – all in one place."

Elemenio is available on the clinical smartphones Mission Partners use while on patient floors. At the tap of the screen, they can access a variety of content on the platform, including evidence-based best practices, bite-sized video guides for how to do different procedures, pre-learning for in-seat classes and interactive activities. There's also an accountability function built into the app.

"We think this is going to be great for Mission Partners because they won't have to click through an entire policy, procedure or module to find what they need," said Sam. "Using this platform can also increase work-life balance as learners won't be required to be in so many in-seat classes."

CAREER LADDERS

OSF Advance – Nursing Career Ladders Program replaces the previous opt-in program. The program invests in direct caregiver RNs and LPNs by recognizing their contributions to their nursing practice and OSF HealthCare.

This program aims to retain, support and reward individual academic progression and professional development and includes the full scope of professional nursing practice in the four domains of Nurse as Leader, Nurse as Practitioner, Nurse as Transferor of Knowledge and Nurse as Scientist.

Name	Department	Clinical Ladder
Aiger, Kristin	NICU	Level II
Alexander, Mary	SICU	Level II
Anderson, Rachel	PIC	Level II
Bencher, Jeremy	ED	Level II
Bracht, Katelynn	Peds Acute	Level II
Brown, Leigha	OB	Level II
Bugaieski, Kiley	NSICU	Level II
Burke, Annon	NSICU	Level II
Bush, Erin	ED	Level II
Cahill, Stephanie	WCU	Level II
Clift, Michelle	ED	Level II
Crawford, Kelli	OB	Level II
Danley, Brittany	AMSU	Level II
David, Katie	WCU	Level II
Donlan, Cassidy	WCU	Level II
Drennen, Lauren	PIC	Level II
Drum, Kristin	OB	Level II
Ehnle, Jenna	PICU	Level II
Emerson, Jill	Cardiac Cath	Level II
Enriquez, Ariana	Neuro	Level II
Fangmeier, Payton	AHU	Level II
Ferm, Taylor	L&D	Level II

Flynn, Heather	OB	Level III
Giedeman, Veronica	SICU	Level II
Greer, Sarah	L&D	Level III
Hahn, Julie	OB	Level II
Haines, Rachel	NICU	Level II
Hainline, Chayenne	L&D	Level II
Hanlin, Emma	L&D	Level II
Hanlin, Kelsey	L&D	Level II
Hanson, Rachel	ED	Level III
Hart, Heidi	OB	Level II
Hart, Marita	L&D	Level II
Hartseil, Leanne	OB	Level III
Hendel, Sally	L&D	Level II
Henderson, Devaney	Neuro	Level II
Holmes, Hilary	Peds Hem	Level III
Holthaus, Megan	ED	Level II
Holthe, Paige	WCU	Level II
Hulva, Elizabeth	OB	Level III
Ince, Rosemary	L&D	Level II
Jacob, Sarah	Wound	Level II
Jason, Jacklyn	GI Lab	Level II
Johnson, Abbey	WCU	Level II
Jones, Sabrina	Nephrology	Level II
Jorgensen, Brooke	MICU	Level III
Kaiser, Brooke	L&D	Level III
Keimig, Ann	AHU	Level II
Kelleher, Molly	PICU	Level II
King, Elizabeth	OB	Level II
Klassen, Anna	Wound	Level III
Kominkiewicz, Amy	OB	Level III

Kramer, Lauren	4-surg	Level III
Krone, Ashley	ED	Level III
Linden, Sean	ED	Level II
Lippert, Anna	ED	Level II
Litwiller, Karla	BRC	Level II
Maas, Bailee	OB	Level II
Madigan, Kathryn	OB	Level III
Malcom, Andrew	AHU	Level II
Markley, Courtney	WCU	Level III
Masters, Amanda	NICU	Level II
McKinley, Emma	L&D	Level II
Monckton, Ashley	WCU	Level II
Mueller, Alexis	WCU	Level II
Myers, Eric	NICU	Level II
Nanninga, Debra	Neuro	Level II
Nelson, Sarah	Pulmonology	Level II
Nicholls, Abigail	AHU	Level II
Norris, Sara	Dialysis	Level II
Oberle, Skylyn	OB	Level II
O'Connor, Rebekah	Pediatrics Acute	Level III
Osman, Tara	OB	Level II
Owens, Christina	SSU	Level III
Perkins, Jess	L&D	Level II
Quezada Manzo, Larissa	WCU	Level II
Reber, Mackenzie	ED	Level II
Richardson, Lisa	BRC	Level III
Rogy, Lindsay	ED	Level II
Rohlwing, Emily	L&D	Level IV
Schlueter, Kelsie	OB	Level III
Shaner, Corrine	L&D	Level II

Shofner, Tonia	ED	Level II
Sivori, Stephanie	L&D	Level III
Skory, Jesse	ED	Level II
Sutton, Stephanie	IR	Level II
Tetzloff, Allison	Pediatrics GI	Level II
Thies, Mallory	Urology	Level II
Thompson, KC	L&D	Level II
Tilley, David	ED	Level II
Wagenbach, Jill	Cardiac ICU	Level II
Warmick, Jada	ED	Level II
Warning, Stacy	L&D	Level III
Widmer, Sheilah	Neuro	Level II
Williams, Rachel	ED	Level II
Worrall, Kaitlyn	ED	Level II
Youngman, Emily	Cardiac Cath	Level II

OSF Advance – Nursing Career Ladders Program Participants



SERVING THE COMMUNITY

Serving our communities is crucial for building unity and solidarity, addressing local needs and positively impacting people’s lives. Engaging the community through projects and outreach fosters empathy, promotes personal growth and strengthens social bonds.

Community Baby Shower

The Community Baby Shower, hosted by OSF Children’s Hospital and the University of Illinois College of Medicine Peoria, is a free event that serves as a one-stop shop for information, education and resources.

Peanut Butter and Jelly Food Drive

OSF nurses have collected hundreds of peanut butter and jelly donations for Sophia’s Kitchen. Volunteers make hundreds of peanut butter and jelly sandwiches daily.

Garden of Hope

Located at 1414 W. Antoinette St., adjacent to St. Ann Catholic Church, the Garden of Hope provides a safe place for family, friends and neighbors to gather and support each other. The garden project aims to inspire the community and connect volunteers and our Mission Partners to promote healthy lifestyles. The project aligns with the church’s role in ministering to the whole person – body, mind and spirit and fulfills several components of the Faith Community Nursing Program Model for Healthy Living.



BUILDING FOR THE FUTURE

OSF HealthCare Cancer Institute

With the opening of the OSF Cancer Institute in early 2024, leaders, nurses and staff have joined to develop world-class patient care, patient workflows, Mission Partner education and training, and all components needed to transition to the new facility.

Some highlights of services include:

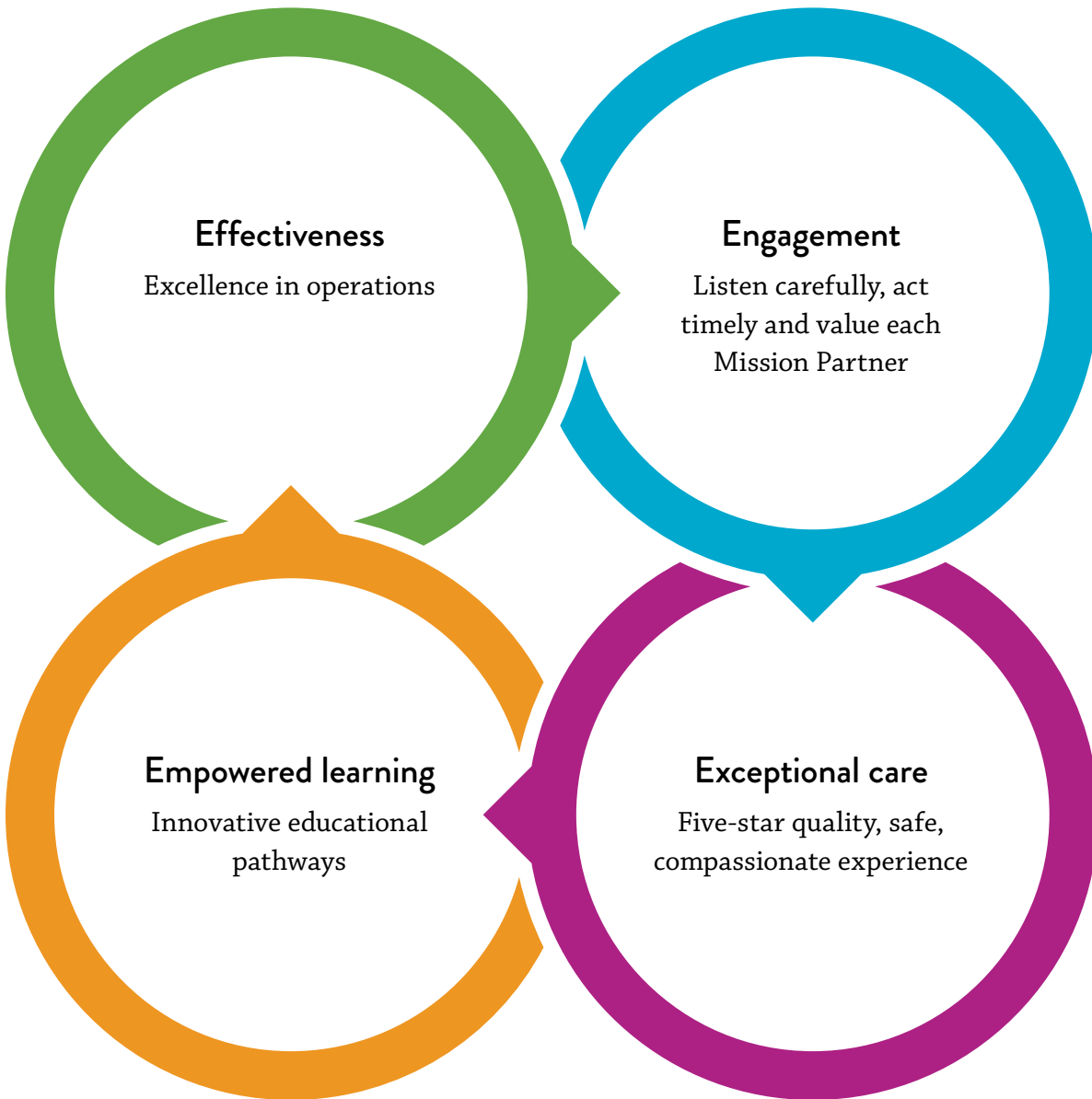
- More comfort and privacy within the new Infusion Center
- A single point of intake with referrals to services within the OSF Cancer Institute coordinated by a nurse
- Stacked testing for newly diagnosed patients where all imaging needed for proper staging is completed in one day
- Nurse navigators provide education, advocacy, reduce barriers and coordinate a patient's care
- Multidisciplinary approach to care with state-of-the-art tumor board conferences and clinics
- Support from advanced practice providers for suspicious lesions, newly diagnosed patients and patients at high risk for developing cancer
- Oncology-specific clinics such as palliative care, cardio-oncology and intimacy concerns
- Nurse-led Survivorship Program-START (Surviving, Thriving And Recovering Together)
- Low-Dose CT program, as well as other preventive and screening programs
- Teaching kitchen
- Rehabilitation and massage therapy
- Surgical oncology
- Radiation therapy, including proton therapy
- Supportive services: counseling, financial navigation and social work, nutrition support from oncology-specific dietitians

The OSF Cancer Institute will shine a new light of hope on cancer patients and their loved ones by being a destination center providing comprehensive oncology care to Central Illinois and surrounding communities and regions.



2024 NURSING STRATEGIC PLAN

Clinical and nursing strategic areas of focus





OSF HealthCare Saint Francis Medical Center
530 NE Glen Oak Ave., Peoria, IL 61637

osfhealthcare.org